



CREATING  
VALUES  
BLOWN-FILM LINES

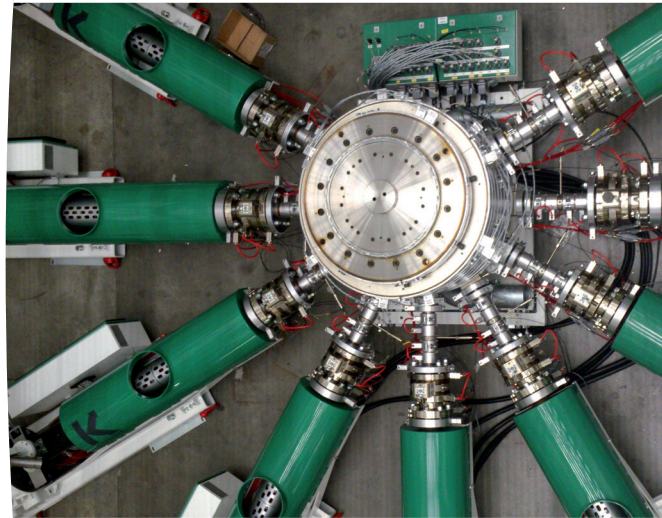
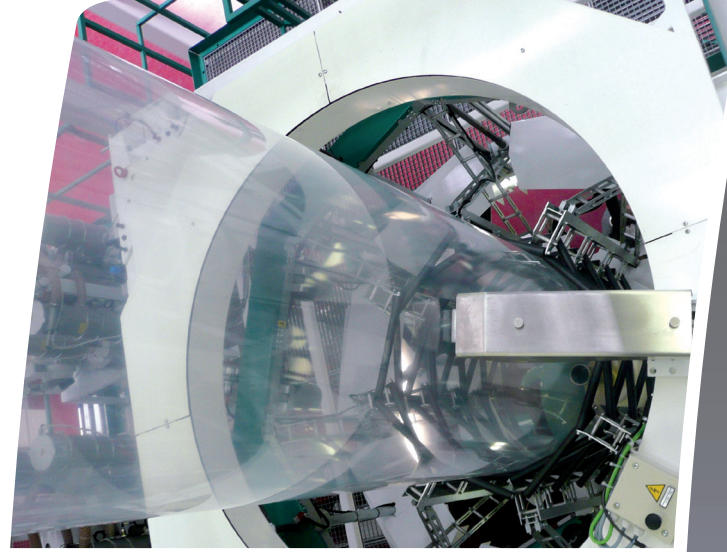


**blowing the shape**



## Special features:

- **Structures:** 1 / 3 / 5 / 7 / 9 / 11 up to 13 layers
- **Raw materials e.g.:** PE, PP, PS, PET, PA, EVOH, PVOH, COC, EVA, EMA, ionomer and others
- **Film thickness:** 5  $\mu$  up to 250  $\mu$
- **Film width:** 250 mm up to 3600 mm double flat
- **Capacity:** 20 kg up to 1200 kg
- **Production speed:** 10 up to 300 m/min
- **Film characteristics:**
  - superior thickness tolerances
  - perfect flatness
  - improved mechanical properties
- **Applications e.g.:** industrial, food, pharmaceutical, agriculture



Lines for the production  
of Air-cooled-Blown films



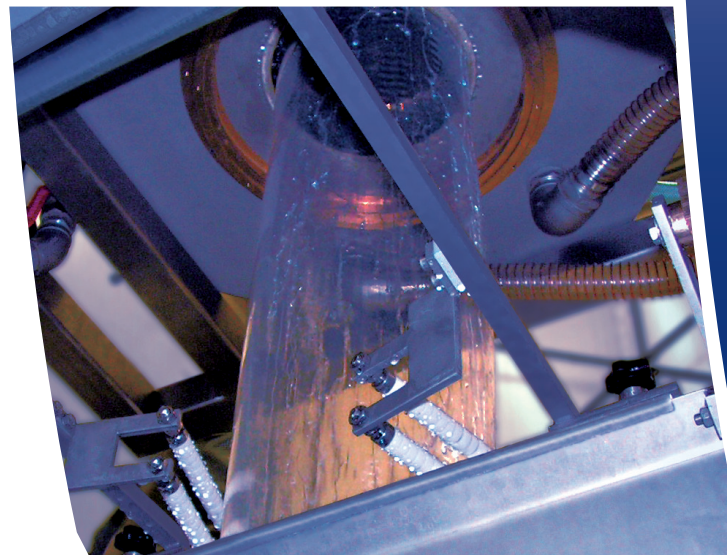
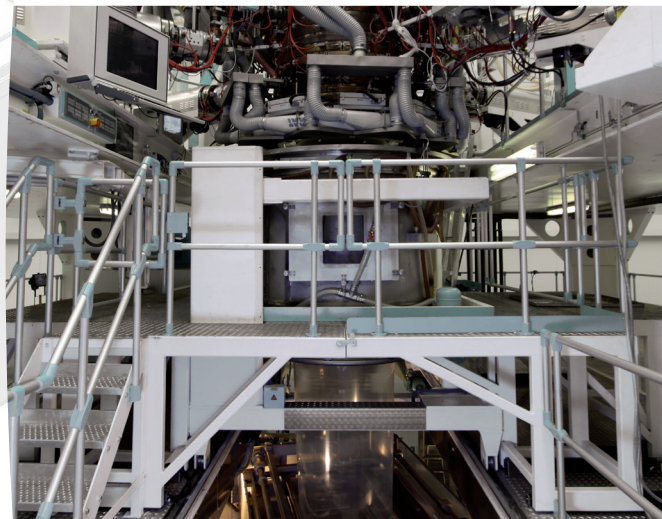
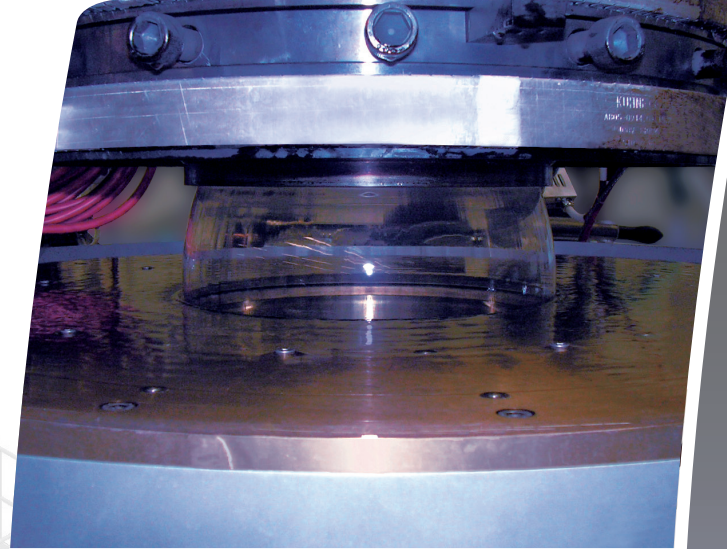
A high-speed photograph of water droplets and splashes, creating a dynamic and textured background. The droplets are in various stages of motion, some sharp and some blurred, against a light blue background.

**freezing the shape**



## Special features:

- **Structures:** 3 / 5 / 7 / 9 / 11 up to 13 layers
- **Raw materials e.g.:** PE, PP, PS, PET, PA, EVOH, PVOH, COC, EVA, EMA, ionomer and others
- **Film thickness:** 40  $\mu$  up to 800  $\mu$
- **Film width:** 700 mm up to 2400 mm double flat
- **Capacity:** 250 kg up to 2500 kg
- **Production speed:** 30 up to 100 m/min
- **Film characteristics:**
  - excellent optical properties (transparency and brightness)
  - excellent deep drawing properties (extremely amorphous)
  - very high softness
- **Applications e.g.:** films for meat- and cheese packaging, high barrier films for vacuum bags or deep-drawn articles like trays or for technical applications medical applications like IV-bags or blood bags with high demand for puncture resistance, tear resistance and brilliant optical properties



Lines for the production  
of Water-Quenched-Blown  
films

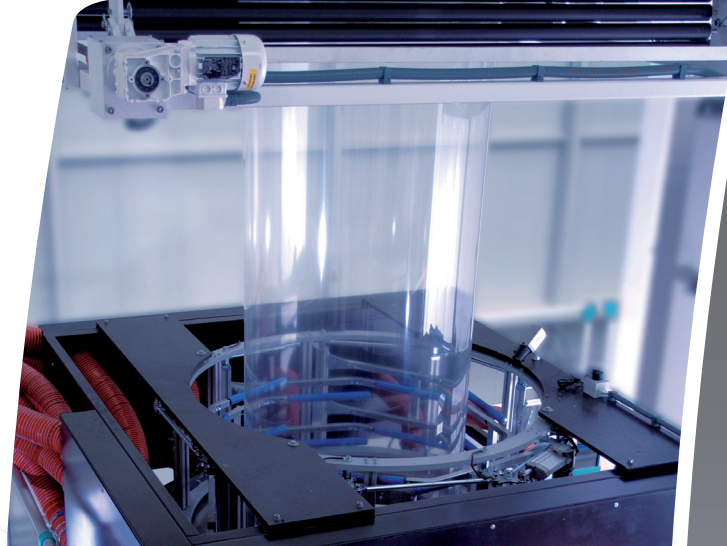


**keeping the shape**



## Special features:

- **Structures:** 3 / 5 / 7 / 9 / 11 / 13 up to 17 layers
- **Raw materials e.g.:** PE, PP, PS, PET, PA, EVOH, PVOH, COC, EVA, EMA, ionomer and others
- **Film thickness:** 15  $\mu$  up to 80  $\mu$
- **Film width:** 900 mm up to 2400 mm double flat
- **Capacity:** 150 kg up to 1000 kg
- **Production speed:** 30 up to 300 m/min
- **Film characteristics:**
  - high or adjustable shrink (min. 0-2%, max. up to 70%, depending on raw materials)
  - excellent barrier properties (oxygen and water barrier)
  - excellent optical properties (transparency and brightness)
  - extreme high puncture resistance
  - good sealability (low temperature sealing, high sealing strength)
- **Applications e.g.:** high barrier films with or without shrink for food packaging (lid films, flow packs, pouches) or for technical applications



Lines for the production  
of bi-orientated flat films  
for high barrier packaging



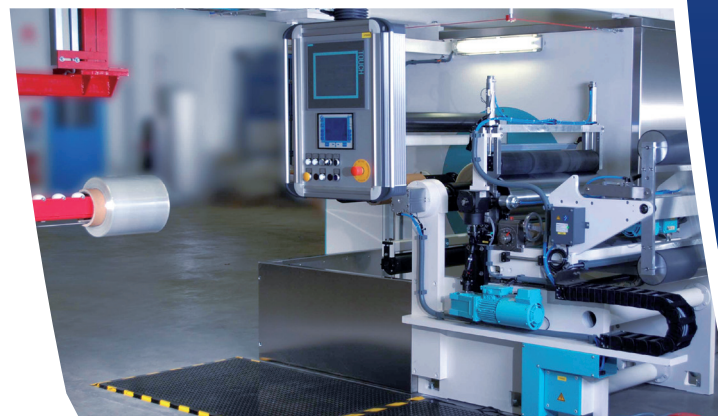
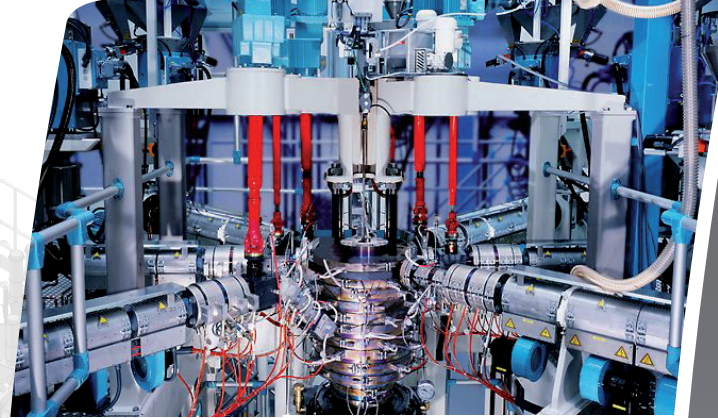
**following the shape**





## Special features:

- **Structures:** 3 / 5 / 7 / 9 / 11 up to 13 layers
- **Raw materials:** PE, PP, PS, PET, PA, EVOH, PVOH, COC, EVA, EMA, ionomer and others
- **Film thickness:** 20 up to 150  $\mu$
- **Film width:** 100 mm up to 900 mm double flat
- **Capacity:** 50 kg up to 200 kg
- **Production speed:** 30 up to 100 m/min
- **Film characteristics:**
  - high or adjustable shrink (min. 0-2%, max. up to 70% depending on raw materials)
  - excellent barrier properties (oxygen and water barrier)
  - excellent optical properties (transparency and brightness)
  - extreme high puncture resistance
  - good sealability (low temperature sealing, high sealing strength)
- **Applications e.g.:** shrink bags or -films for meat and cheese packaging, high barrier films with or without shrink for food packaging (lid films, flow packs, pouches) or for technical applications



Lines for the production of bi-orientated tubular films for shrink-bags or high barrier packaging

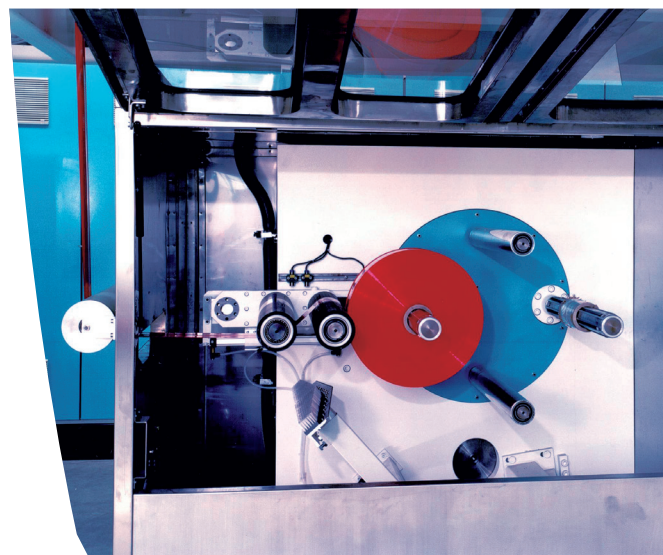
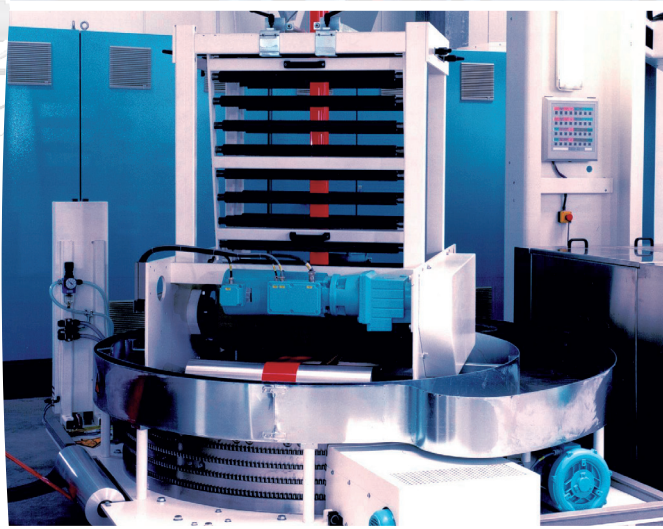
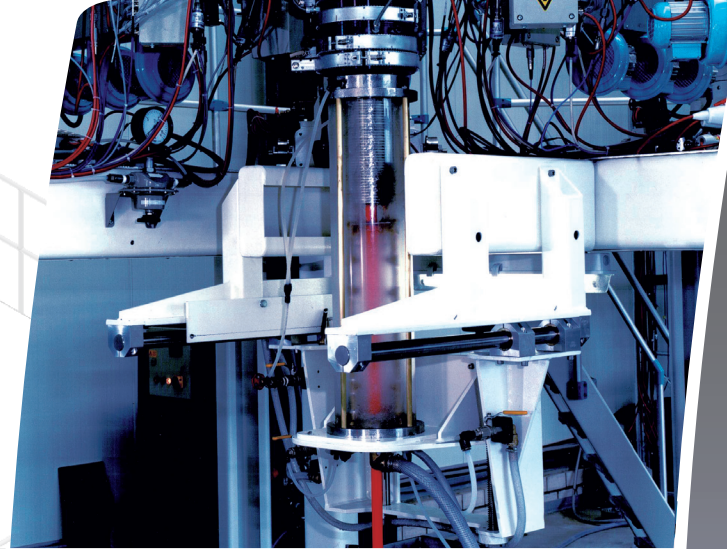
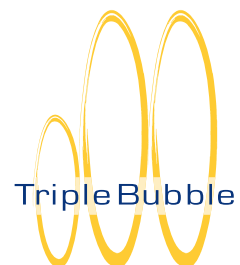




**creating the shape**

## Special features:

- **Structures:** 1 / 3 / 5 / 7 up to 9 layers
- **Raw materials e.g.:** PE, PP, PS, PET, PA, MXD6, EVOH, PVOH, COC, EVA, EMA, ionomer and others
- **Film thickness:** 20  $\mu$  up to 80  $\mu$
- **Film width:** 30 mm up to 350 mm double flat
- **Capacity:** 20 kg up to 80 kg
- **Production speed:** 50 up to 300 m/min
- **Film characteristics:**
  - high or adjustable shrink (min. 0-2%, max. up to 40%, depending on raw materials)
  - excellent barrier properties (oxygen and moisture barrier)
  - excellent optical properties (transparency and brightness)
  - extreme high puncture resistance
- **Applications e.g.:** sausage casings



Lines for the production  
of bi-orientated tubular  
films for sausage casings





CREATING  
VALUES  
BLOWN-FILM LINES

KUHNE ANLAGENBAU GmbH  
Einsteinstraße 20  
D-53757 Sankt Augustin/Germany  
T +49(0) 2241 902 0  
F +49(0) 2241 902 222  
info@kuhne-group.com

[www.kuhne-group.com](http://www.kuhne-group.com)

